

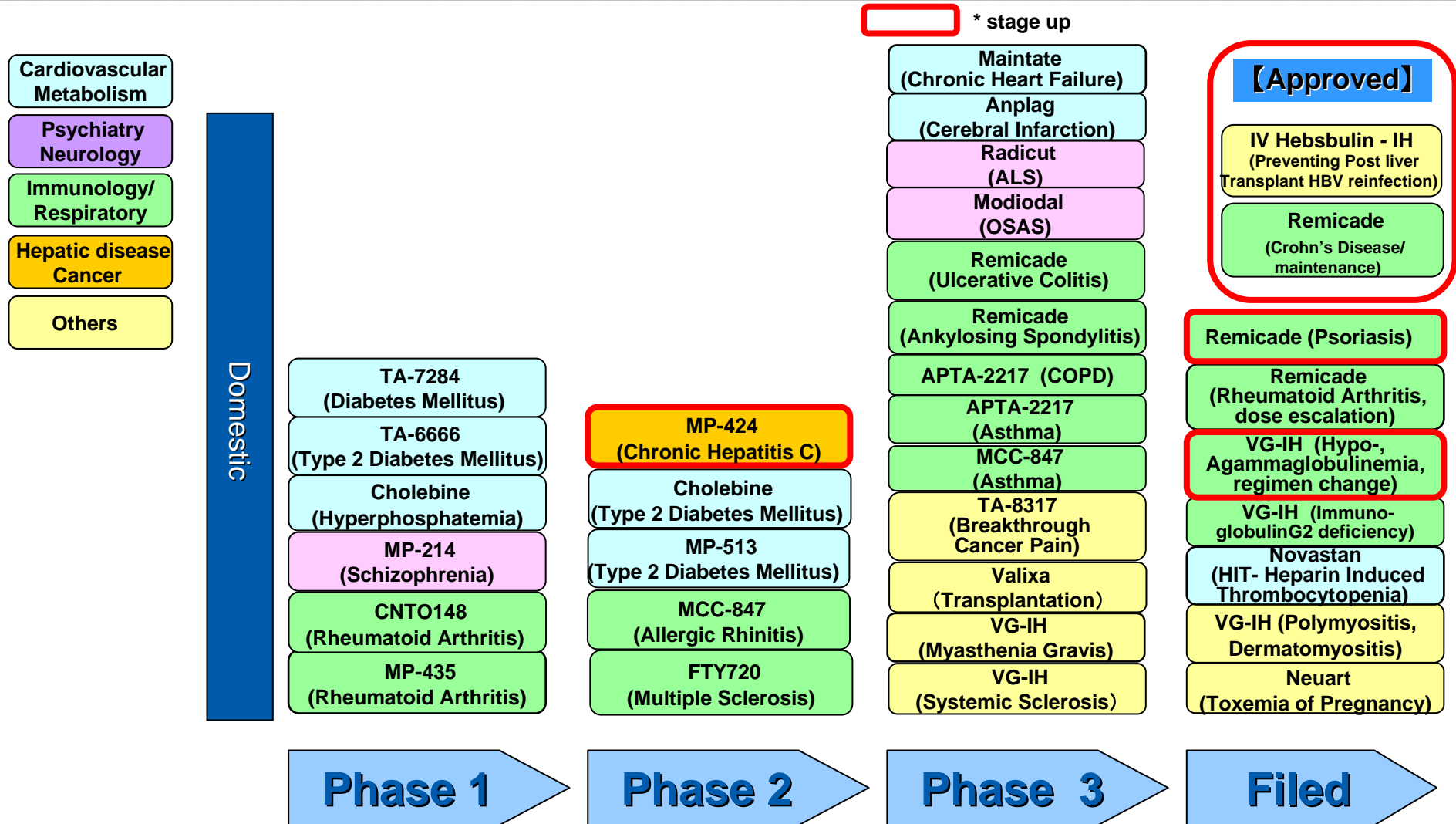
# Development Pipeline & Acceleration of Global Development

May 9, 2008  
FY2007 Business Results Briefing  
Keidanren Kaikan

Ken-ichi Yanagisawa  
Member of the Board of Directors  
Managing Executive Officer  
Development Division

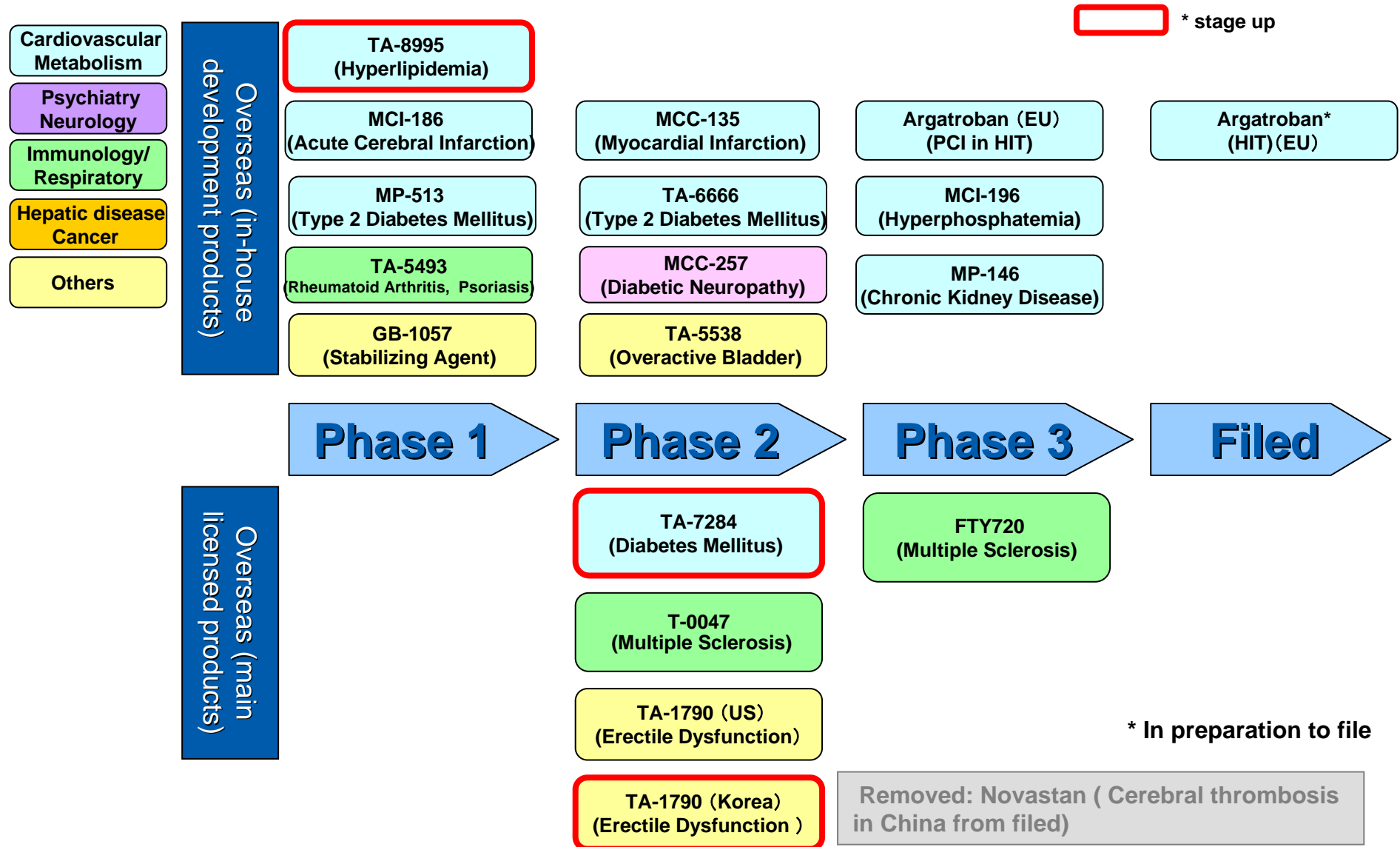
- 1. Development Pipeline Status**
- 2. Priority Development Projects**
- 3. Promotion of EU, US and Asian Development**
- 4. Development Projects –Topics-**

# 1. Development Pipeline Status [Domestic]

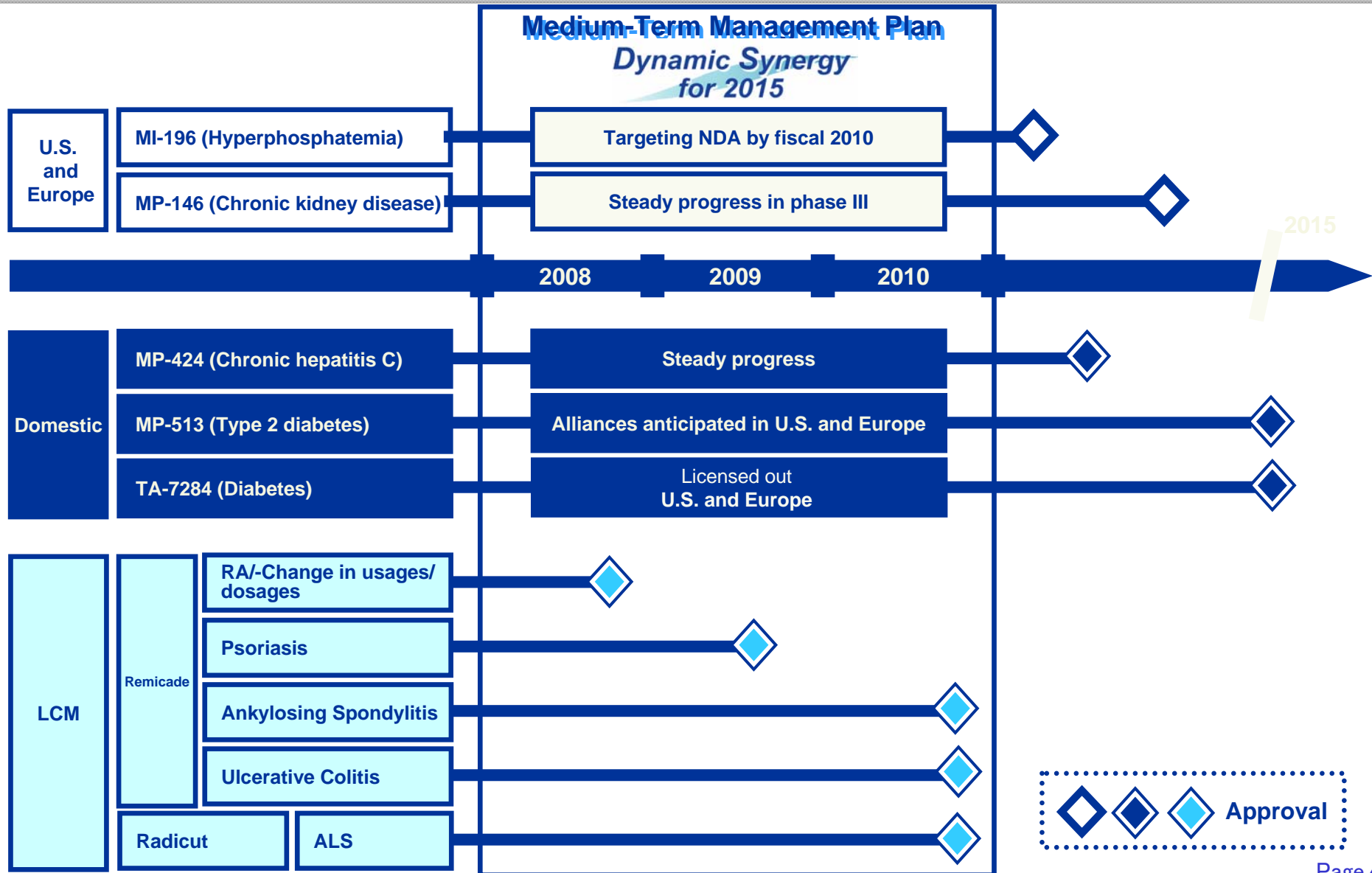


# 1. Development Pipeline Status

*[Overseas] In-house development, licensed products*



# 2. Priority Development Projects



# 2. Priority Development Projects

## MCI-196, MP-146



**US/EU**

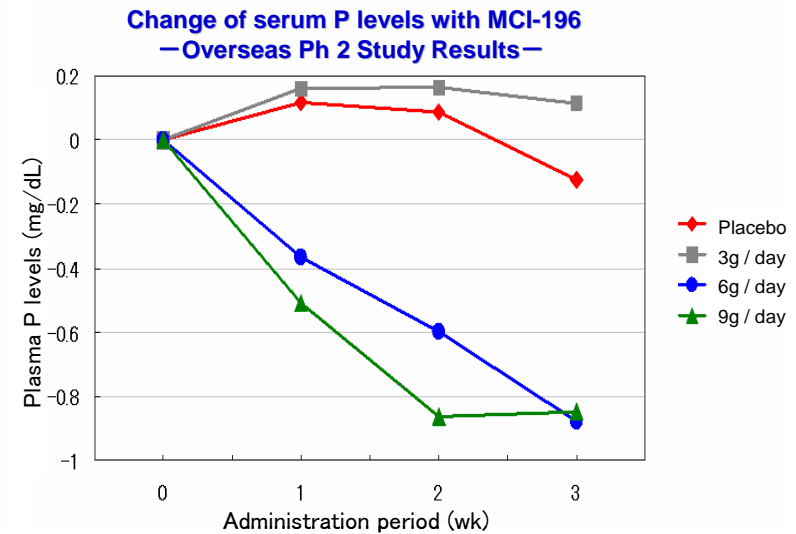
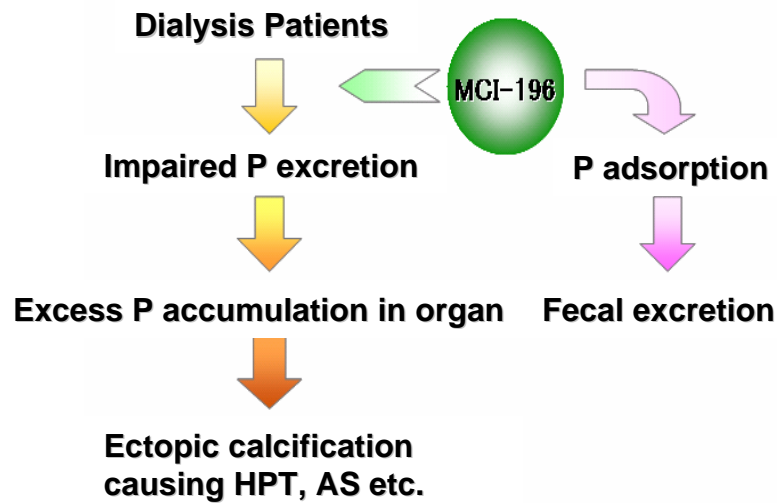
**MCI-196 Hyperphosphatemia**

**Medium-term management plan target**

**Stage: Phase 3**

**Mode of action: phosphate adsorption and excretion**

**NDA**



**MP-146 Chronic kidney disease**

**Steady implementation**

**Stage: Phase 3**

**Mode of action: Oral adsorption hydrocarbon, absorbs and excrete GI uremic toxins**

# 2. Priority Development Projects

## MP-424



### HCV protease inhibitor

#### [Target efficacy & Features]

Improvement of viremia  
(reduction in treatment period and outstanding treatment efficacy)

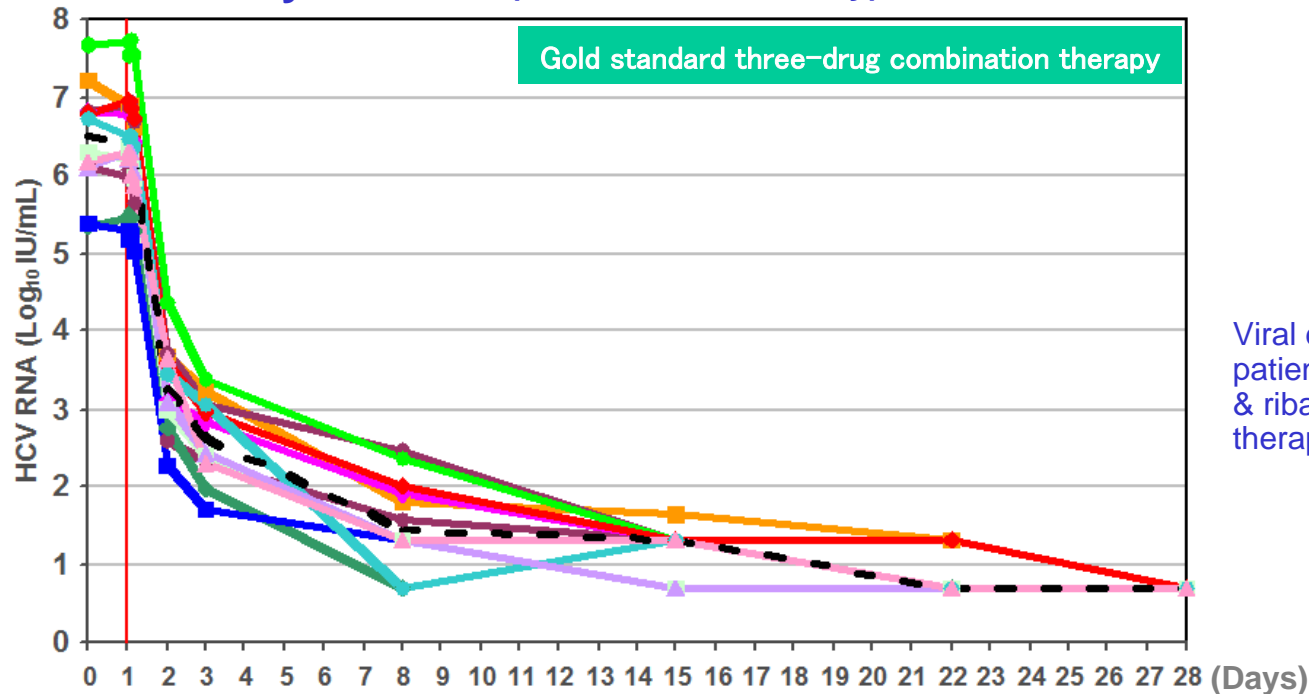
#### [Phase]

**Phase 2 in progress**

#### [On development implementation]

- Expedite applications
- Application of overseas data

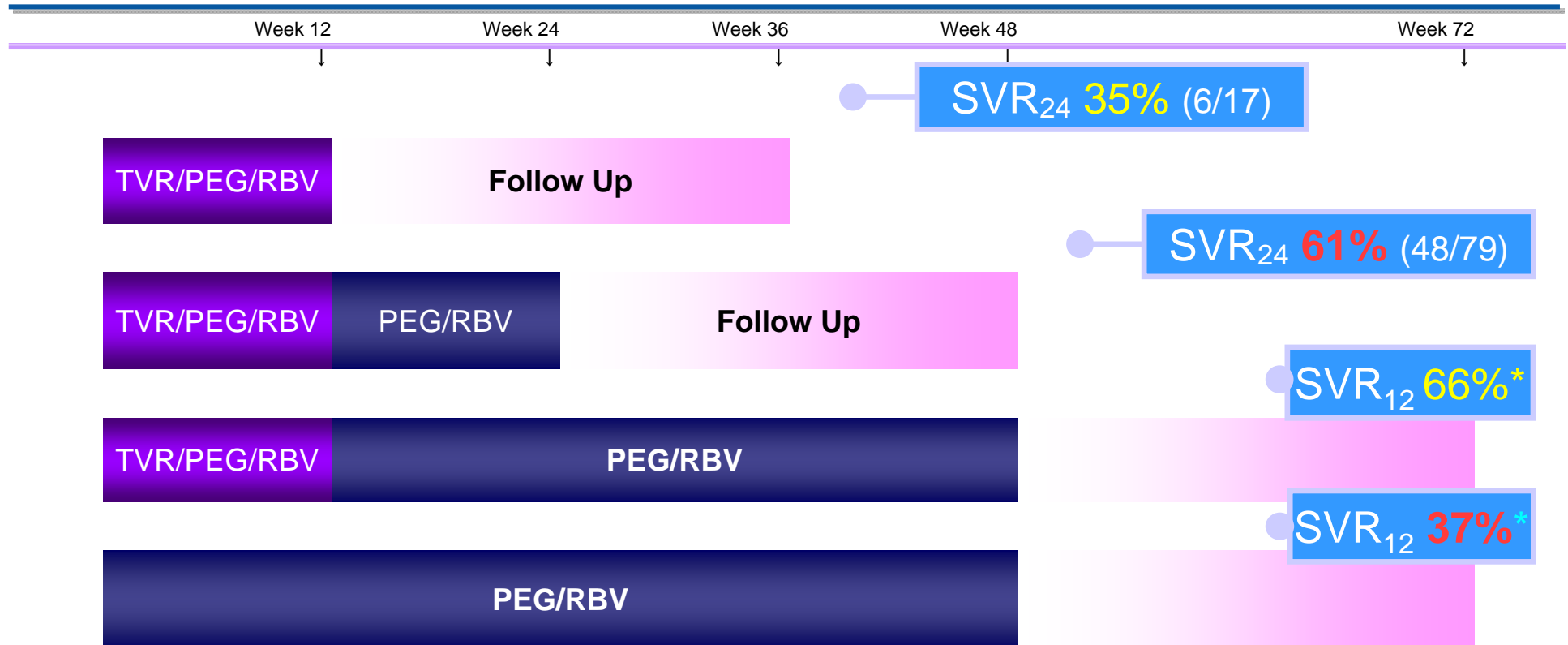
#### US Study Results (VX05-950-102 study)



Viral dynamics in chronic hepatitis C patients on VX-950 (MP-424), PEG-IFN & ribavirin three-drug combination therapy

# 2. Priority Development Projects

## MP-424 Overseas Study Interim Analysis Results



### Indication

**Patients with chronic hepatitis C  
(Genotype 1, Treatment naive)**

\*Jan 23, 2008  
Vertex Press Release

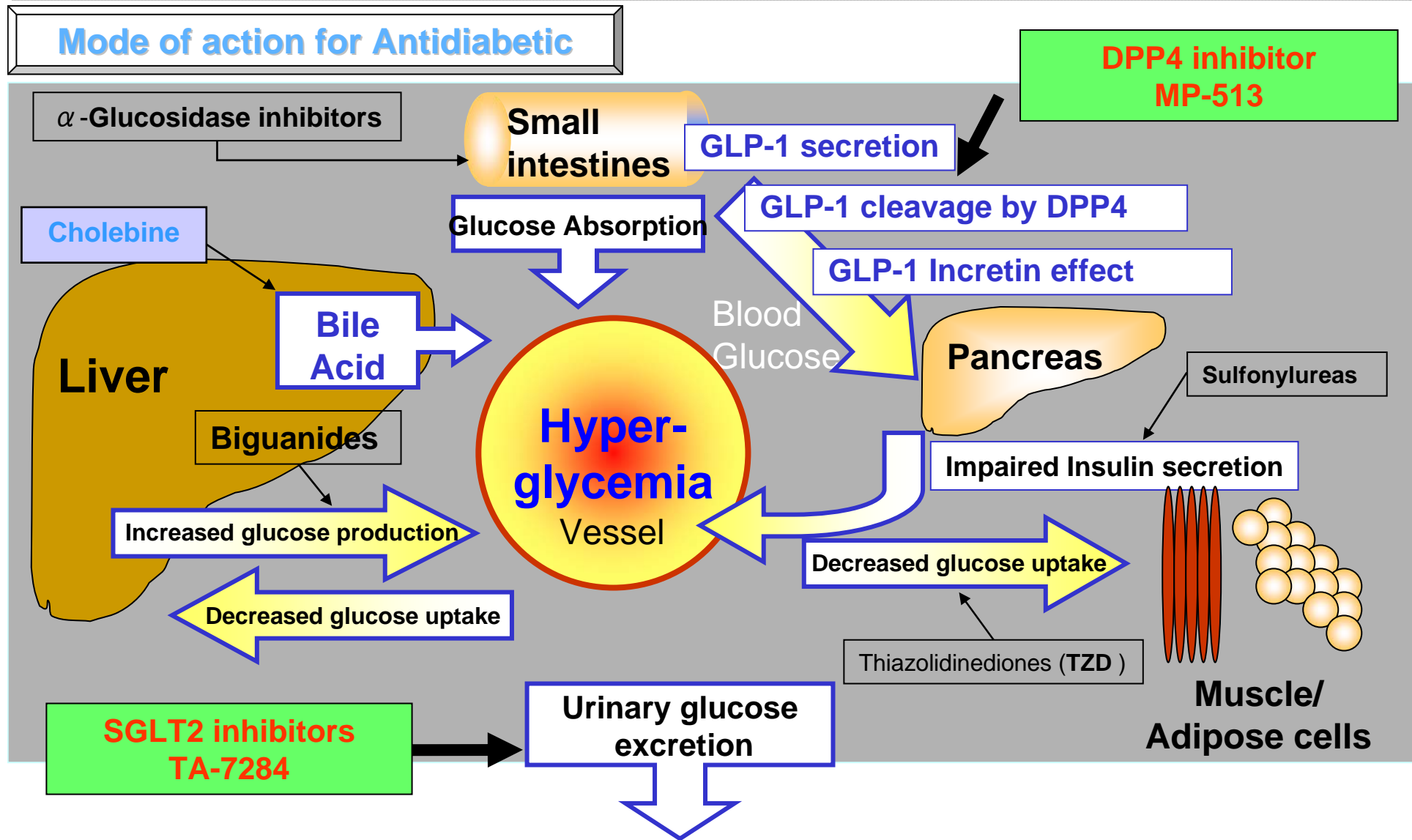
TVR :Telaprevir

PEG: Pegylated-interferon alfa-2a, RBV: Ribavirin

SVR24: undetectable HCV RNA <10 IU/L at 24wk post-treatment

# 2. Priority Development Projects

## MP-513, TA-7284



## 2. Priority Development Projects

### MP-513, TA-7284 & Approach Towards Diabetes

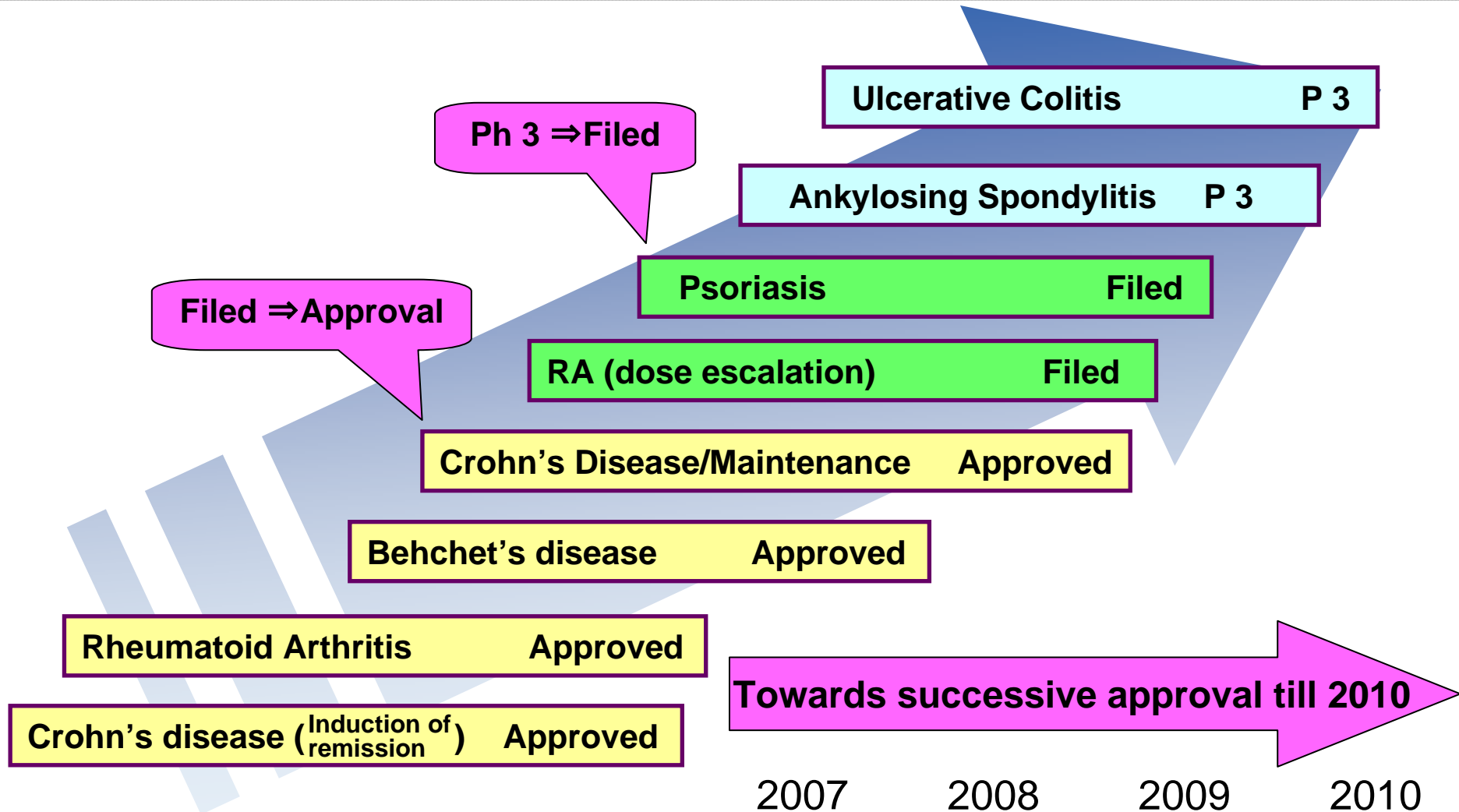


	P 1	P 2	Concept
<b>MP-513</b>	US/EU	Domestic	Long acting, high safety. Best-in-class.
<b>TA-7284</b>	Domestic	US*/EU	Long acting, high safety. First-in-class. Accelerate development by licensee in EU/US.
<b>Cholebine</b>		Domestic	Control of blood sugar and lipids. High safety.

\* Licensed out to JNJ

# 2. Priority Development Projects

## LCM Strategy Remicade



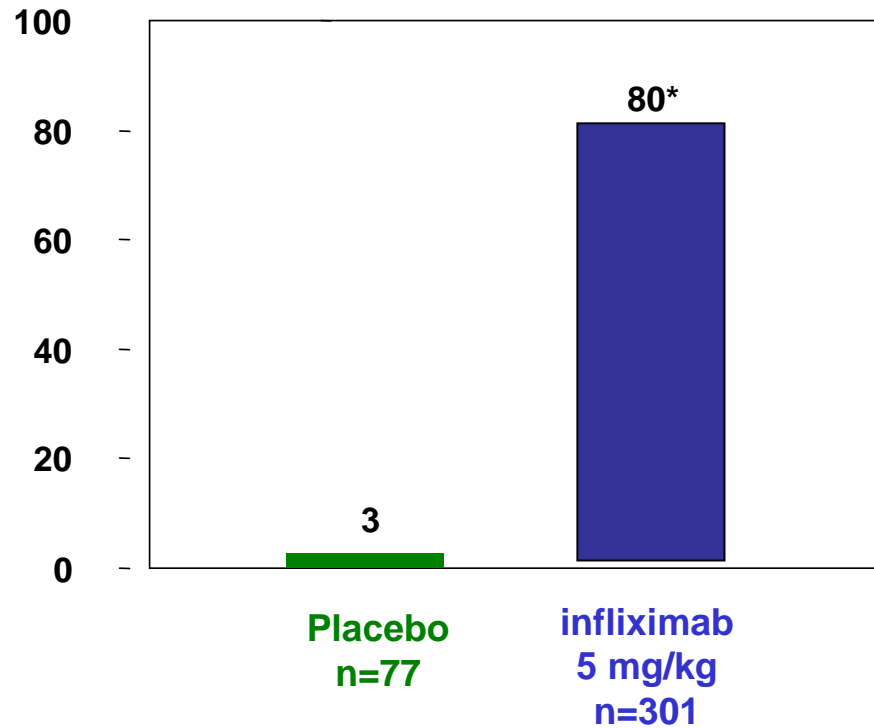
## 2. Priority Development Projects

### *Remicade Psoriasis (Overseas Study Results)*



### Phase 3: Randomized placebo-controlled

75% improvement in PASI at 10 weeks



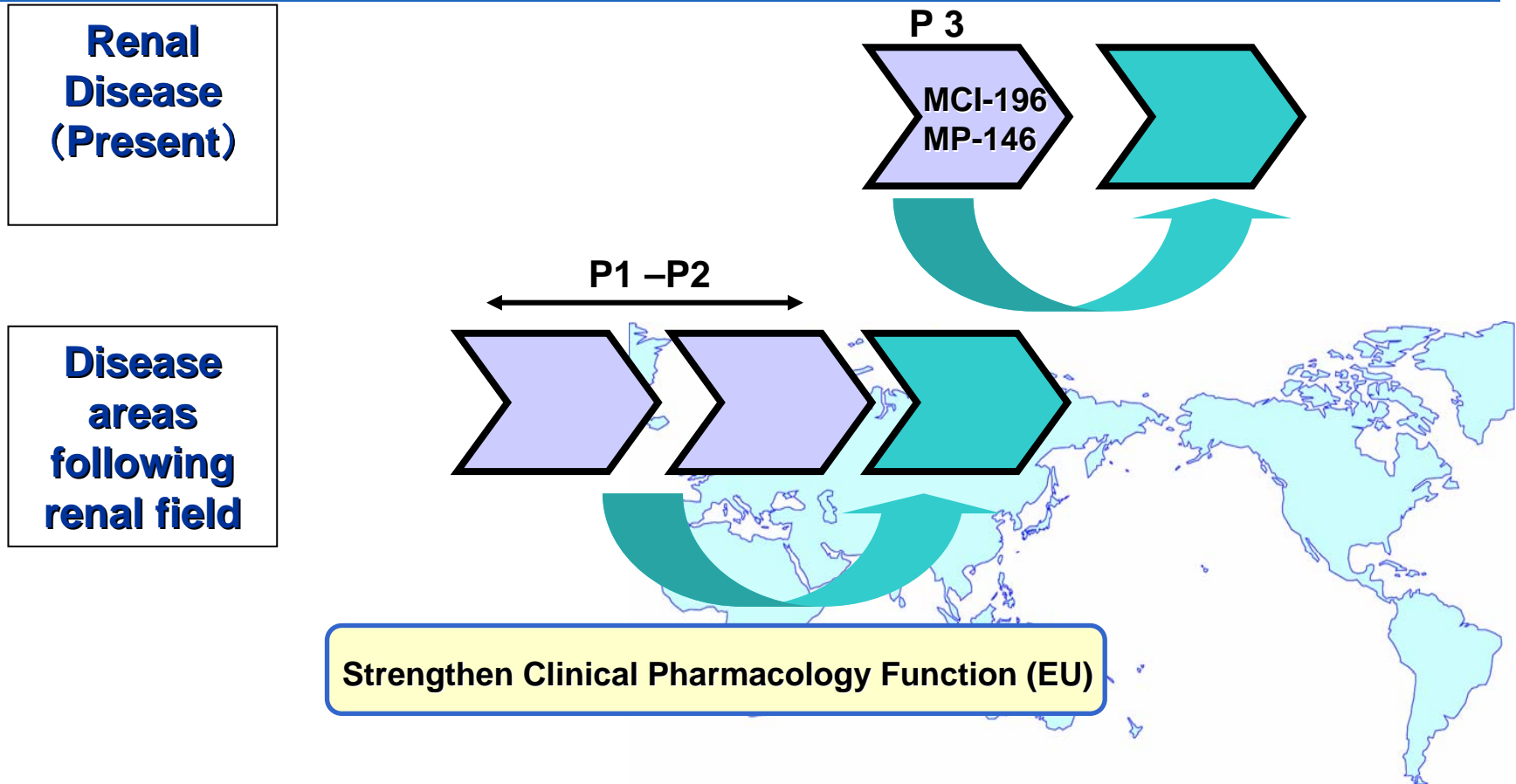
PASI(Psoriasis area and severity index)  
Lancet 2005:366:1367-74

\*p<0.001 vs. placebo

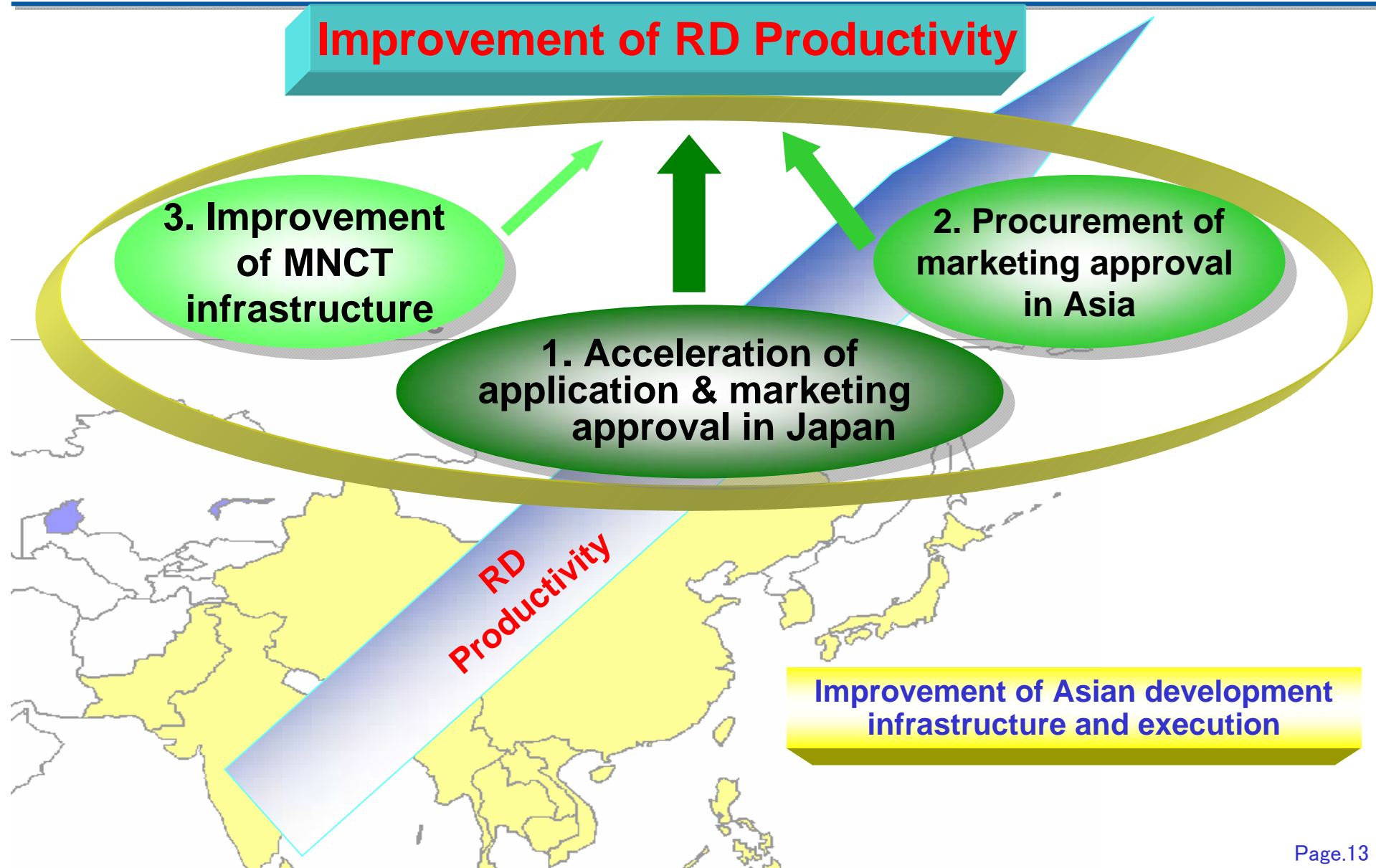
### 3. Promotion of EU/US & Asian Development



- Set 2010 as the prospective goal for new disease areas following the renal field.
- Adopt an optimal strategy for EU/US development expansion based on success rate and sales potential of a carefully selected development product. Also adopt an optimal approach from in-house development, licensing or co-development.



# 3. Promotion of EU/US & Asian Development *Asia*



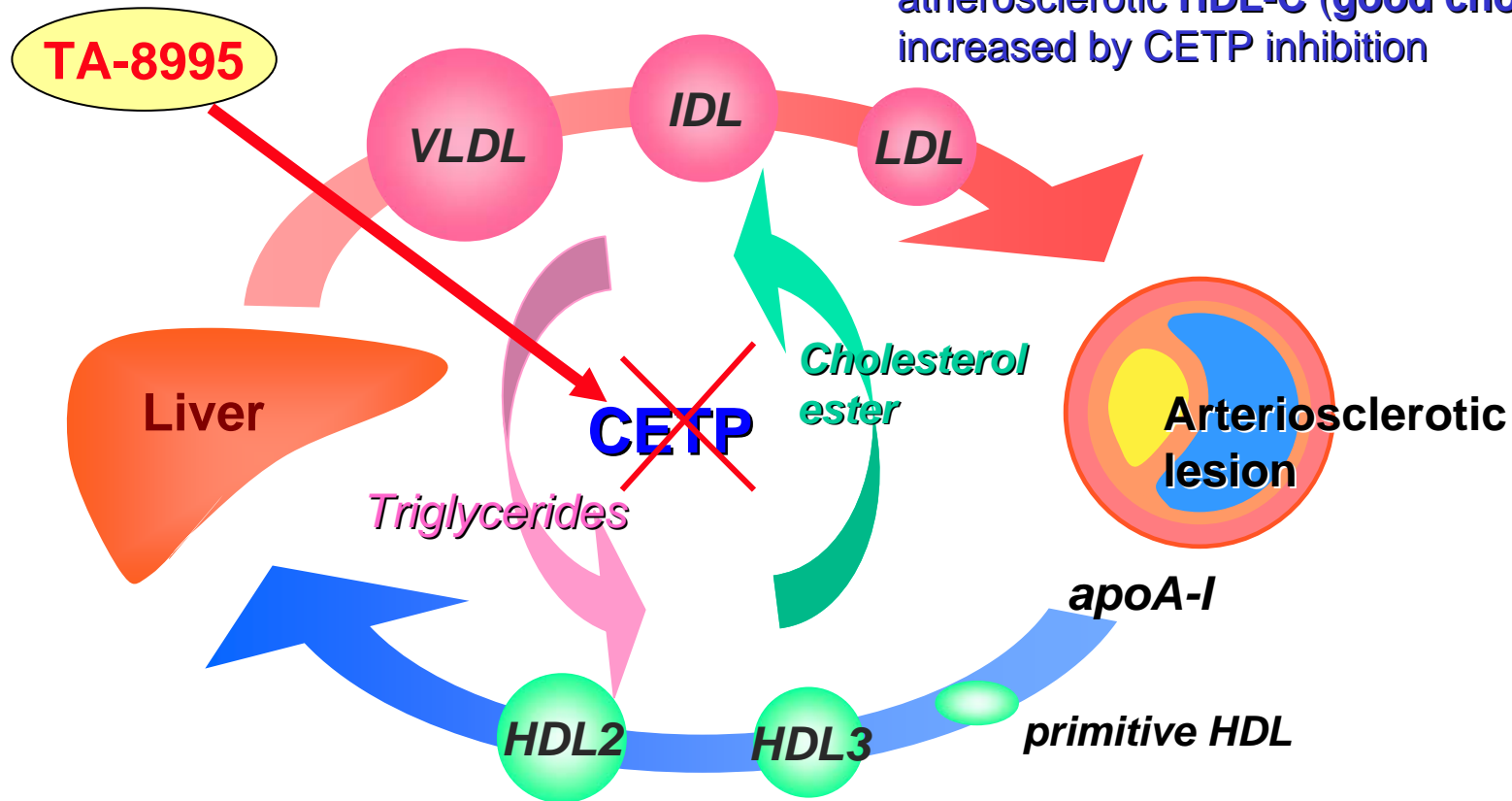
# 4. Development Projects

## TA-8995



**Mode of Action: Inhibition of the cholesterol ester transfer protein (CETP)**  
**Proposed indication: Hyperlipidemia**

The bad cholesterol atherosclerotic inducers LDL-C & VLDL-C are reduced while the anti-atherosclerotic HDL-C (good cholesterol) is increased by CETP inhibition



# 4. Development Projects

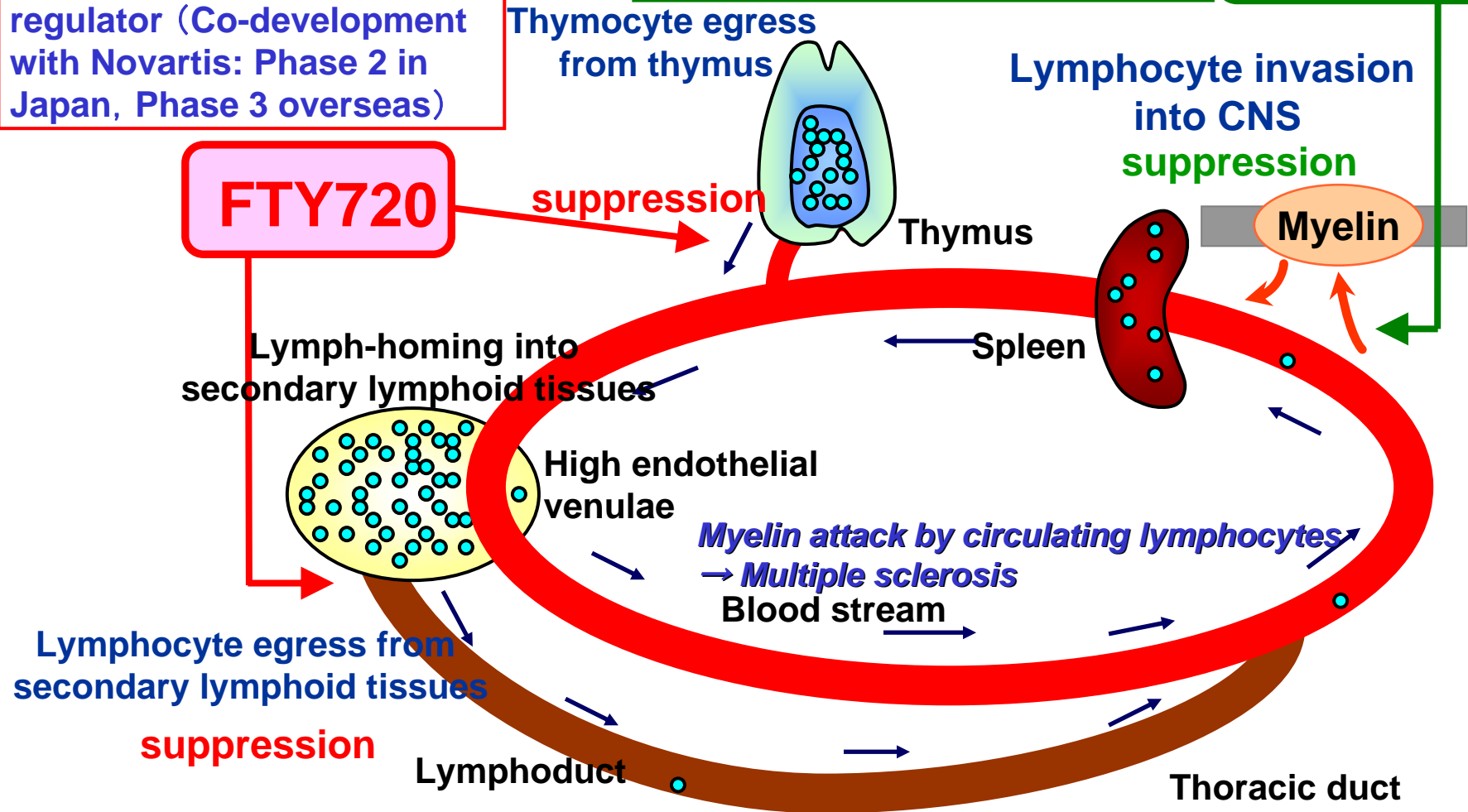
## Multiple Sclerosis: FTY720, T-0047



The world's first sphingosine mono-phosphate receptor regulator (Co-development with Novartis: Phase 2 in Japan, Phase 3 overseas)

Most advanced oral  $\alpha 4$  integrin antagonist (licensed to GSK, in Phase 2)

**T-0047**



### **Cautionary Statement**

**The statements contained in this presentation is based on a number of assumptions and belief in light of the information currently available to management of the company and is subject to significant risks and uncertainties.**